

2101-43 SOUTH STREET

CENTER CITY, PHILADELPHIA, PA 19146

NEW RETAIL
AVAILABLE



Property Highlights

- New Retail Redevelopment
- 1,300-25,000 SF+/- Available
- High Volume Intersection
- Architecturally Dramatic
- Available Immediately

Join:



Information provided by reliable sources. Subject to errors, omissions, price change, prior sales or withdrawal from market without notice.

Contact Information

Gregory Bianchi

T. 215.701.3840

F. 215.557.6495

gbianchi@eusrealty.com

Peter Maggio

T. 215.701.3842

F. 215.557-6495

pmaggio@eusrealty.com

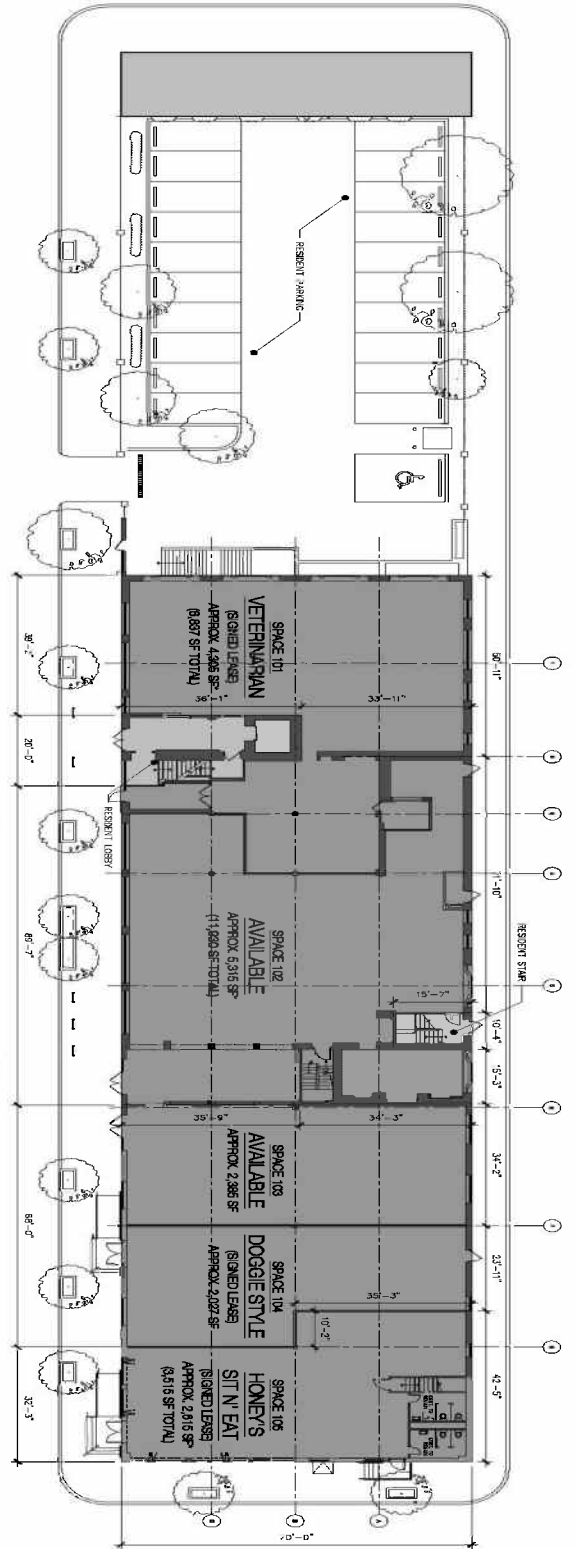
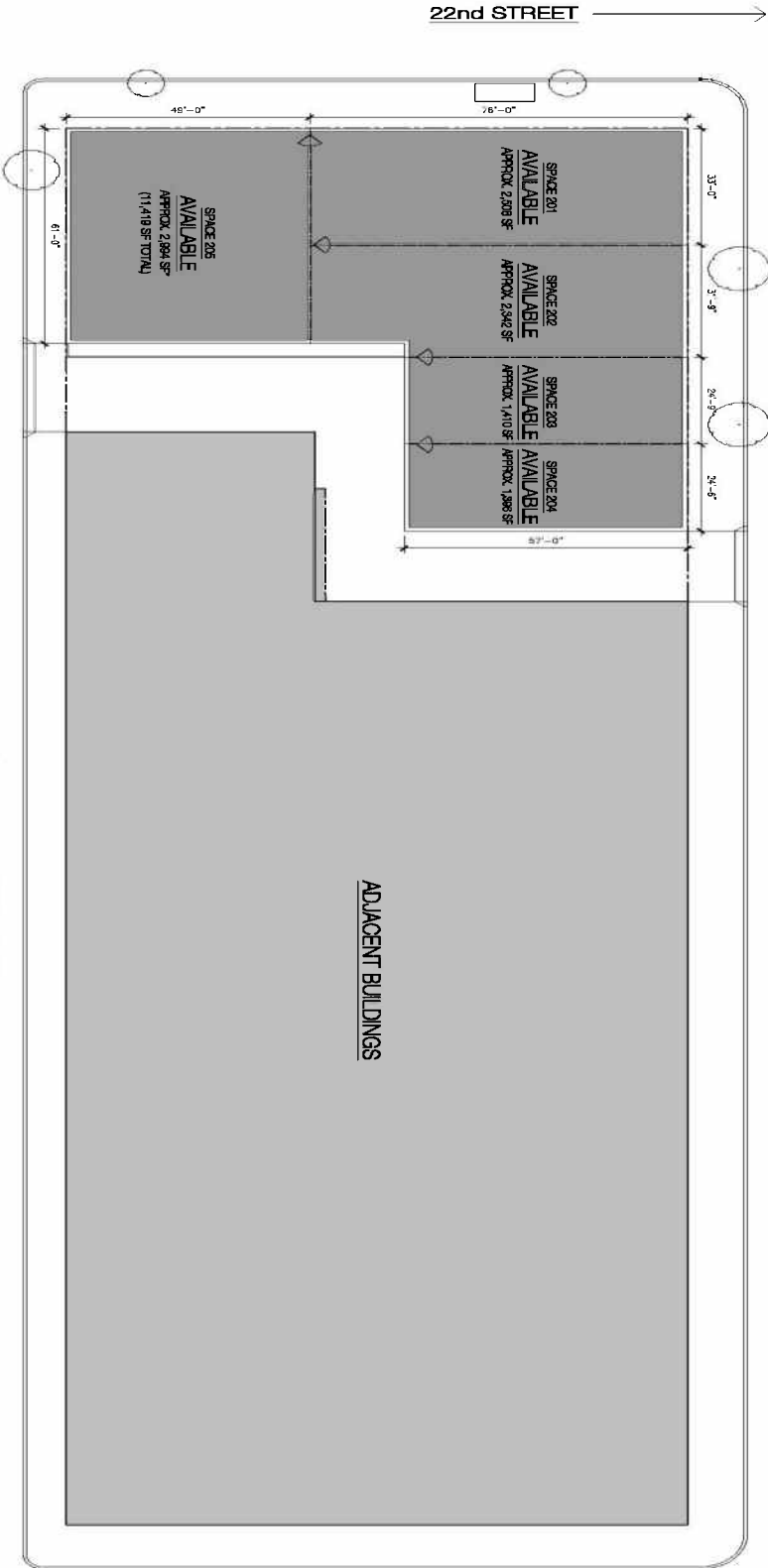
www.eusrealty.com

Developed By:



2101-43 SOUTH STREET

CENTER CITY, PHILADELPHIA, PA 19146



GROUND FLOOR LEASING PLAN

*AREA S FOR GROUND FLOOR ONLY. NUMBER IN PARENTHESES IS TOTAL AREA OF FIRST FLOOR AND BASEMENT OR FIRST FLOOR AND SECOND FLOOR

2101-43 SOUTH STREET

CENTER CITY, PHILADELPHIA, PA 19146

**NEW RETAIL
AVAILABLE**



120-124 East Lancaster Avenue
Suite 101
Ardmore, PA 19003
www.eusrealty.com

Contact Information

Gregory Bianchi

T. 215.701.3840

F. 215.557.6495

gbianchi@eusrealty.com

Peter Maggio

T. 215.701.3842

F. 215.557-6495

pmaggio@eusrealty.com

www.eusrealty.com



Information provided by reliable sources. Subject to errors, omissions, price change, prior sales or withdrawal from market without notice.