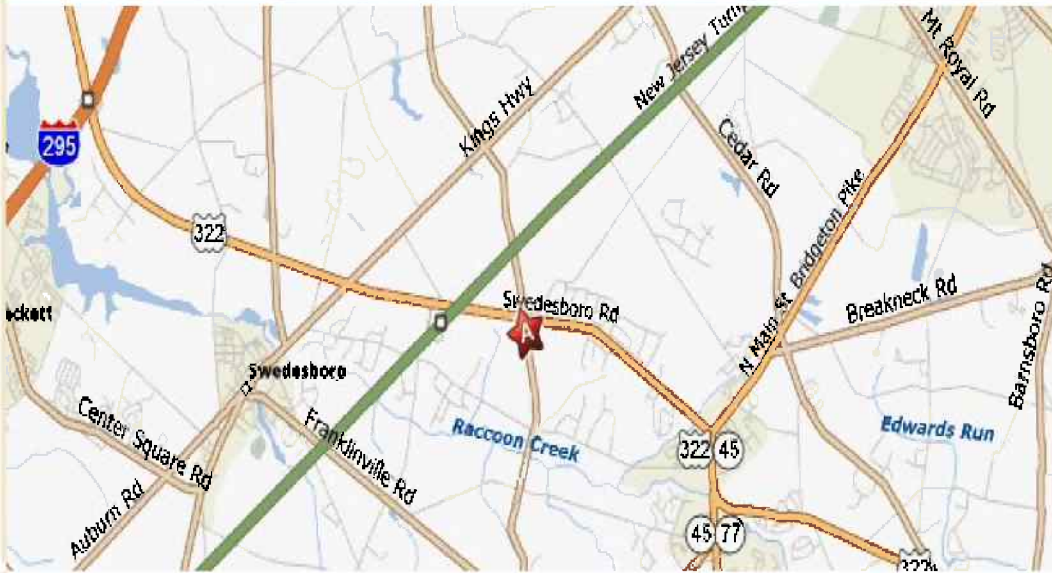


# THE GROVE

ROUTE 322 & TOMLIN STATION ROAD, MULLICA HILL, NJ  
GLOUCESTER COUNTY



THE GROVE AT

MULLICA HILL

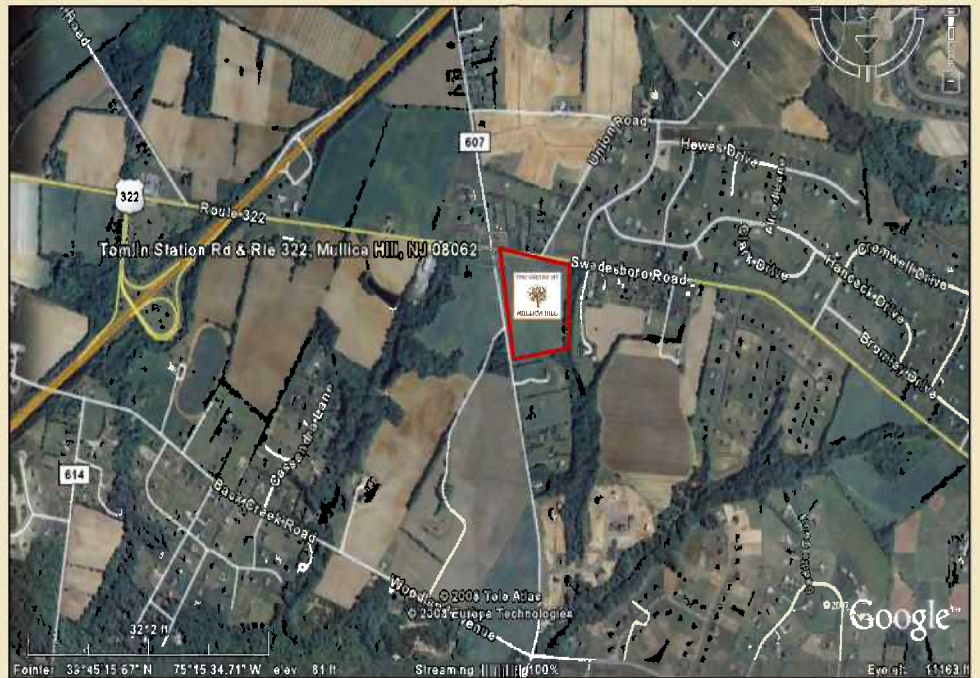
NOW LEASING

## Location

Ideally located along the growth corridor of Route 322 at the intersection of Tomlin Station Road in historic Mullica Hill, NJ

## Property Highlights

- ◆ 30 +/- Acre Mixed Use Development in a Village Setting
- ◆ Be a part of one of the fastest growing townships in the State of New Jersey. Close to booming housing market
- ◆ Proposed new traffic signal at intersection



Mixed Use  
Community  
Featuring  
Retail &  
Office Suites

## Leasing Info:

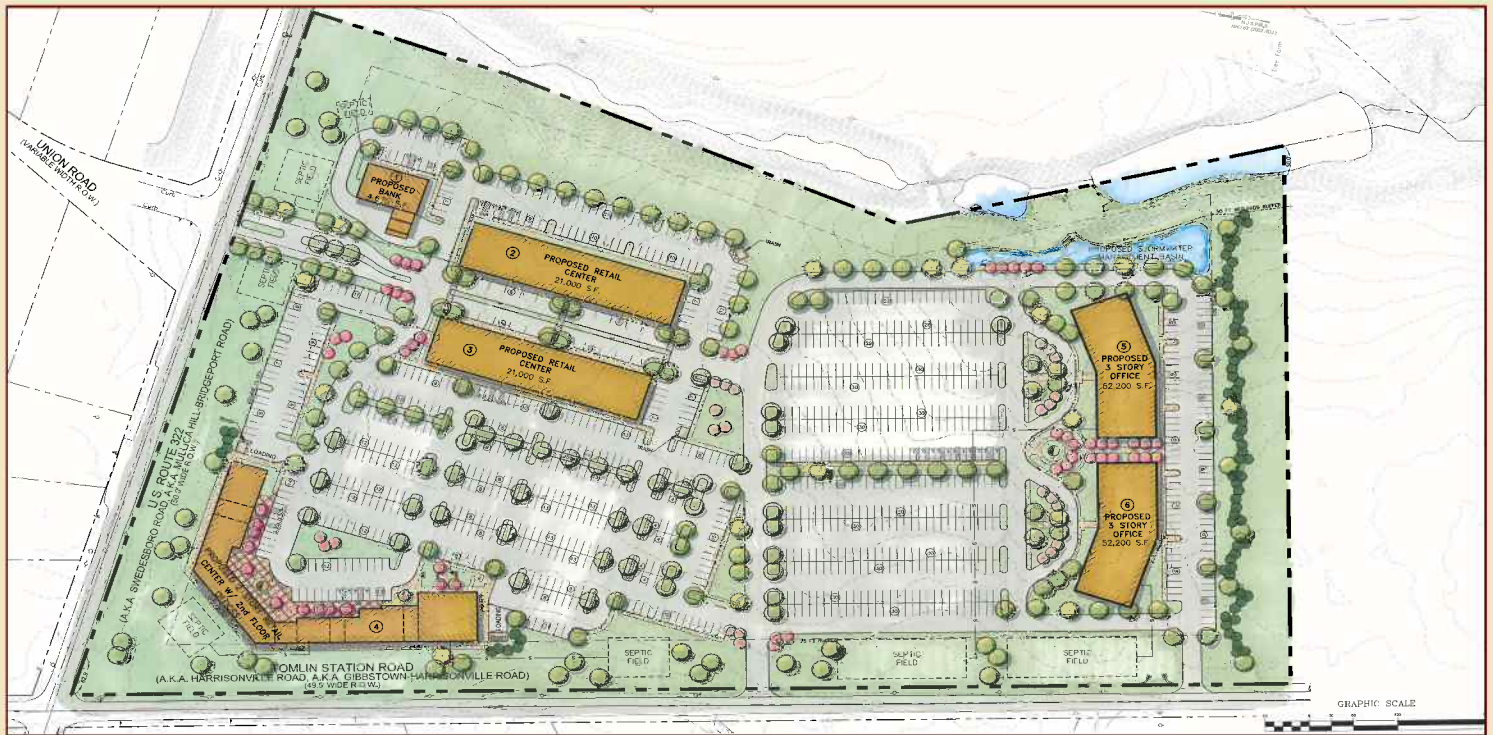
**Gregory Bianchi**  
Vice President  
T. 215-557-9900 x 1141  
F. 215-557-6495  
gbianchi@eusrealty.com

**EUSREALTY**  
ASSOCIATES, INC.



Information provided by reliable sources. Subject to errors, omissions, price change, prior sales or withdrawal from market without notice.

# THE GROVE



## Demographic Overview Report

	1 miles:	3 Miles:	5 miles:
<b>Population</b>			
2012 Projection	1,181	19,620	49,693
2007 Estimate	973	16,422	43,476
2000 Census	640	11,391	33,664
1990 Census	339	7,969	25,639
<b>Growth 1990—2000</b>	88.79%	42.94%	31.30%
<b>2008 Est. Average Household Income</b>	\$129,554	\$107,408	\$94,333
<b>2008 Est. Median Household Income</b>	\$119,192	\$95,498	\$80,713

Developed by:



Leased by:

**USREALTY**  
ASSOCIATES, INC.



120-124 East Lancaster Avenue  
Suite 101  
Ardmore, PA19003  
[www.eusrealty.com](http://www.eusrealty.com)

Information provided by reliable sources. Subject to errors, omissions, price change, prior sales or withdrawal from market without notice.