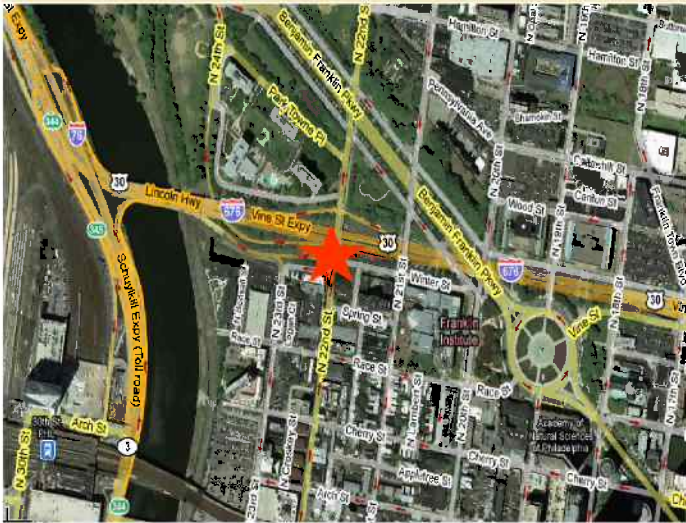


232-234 N. 22ND STREET

LOGAN SQUARE, PHILADELPHIA, PA

1ST YEAR \$5,000 NNN
PER MONTH



Property Highlights

- Approximately 8,200 SF on Two Levels
- Over 45' of Frontage
- Fantastic Accessibility to Major Roads (I-95, I-76 and I-676) & Public Transportation
- Four Public Parking Garages with in One Block
- Ideal for Single User



Information provided by reliable sources. Subject to errors, omissions, price change, prior sales or withdrawal from market without notice.

Leasing Information:

Gregory R. Bianchi

T. 215.701.3840

F. 215.557.6495

gbianchi@eusrealty.com

Peter J. Maggio

T. 215.701.3842

F. 215.557.6495

peter@eusrealty.com

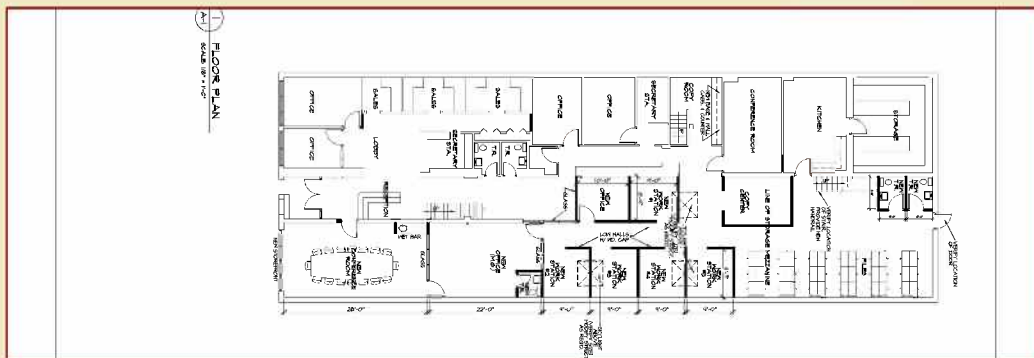
USREALTY
ASSOCIATES, INC.

120-124 East Lancaster Avenue
Suite 101
Ardmore, PA 19003
www.eusrealty.com

232-234 N. 22ND STREET

LOGAN SQUARE, PHILADELPHIA, PA

FIRST FLOOR



SECOND FLOOR



Information provided by reliable sources. Subject to errors, omissions, price change, prior sales or withdrawal from market without notice.