

1601 VINE STREET

CENTER CITY PHILADELPHIA, PENNSYLVANIA



View From 17th & Vine street



View From 16th & Vine street

Leasing Agent



Developer



Location

Northwest Corner of 16th & Vine St., Center City, Philadelphia

Property Highlights

- 1.8M SF +/- Urban Mixed Use Development
- 130,000 SF +/- of Retail Space on Two Levels
- 12,300 SF +/- Available
- Fully Amenitized Development including Quality Retail, Upscale Hotel and Luxury Rental Apartments
- 1,100 total parking spaces will service the Residential, Hotel, and Retail components
- Tower One: 250 Room Full Service Hotel and 250 +/- Residential Units
- Tower Two: 300 +/- Residential Units



Latitude: 39.9583
Longitude: -75.1656

North 16th St At Vine St.
Philadelphia, PA 19102
Radius: 1.0 Miles

North 16th St At Vine St.
Philadelphia, PA 19102
Radius: 3.0 Miles

North 16th St At Vine St.
Philadelphia, PA 19102
Radius: 5.0 Miles

2000 Total Population
2000 Group Quarters
2003 Total Population
2008 Total Population

57,978
5,732
57,747
56,748

455,817
29,350
448,718
438,776

936,656
39,161
920,832
900,915



Information provided by reliable sources. Subject to errors, omissions, price change, prior sales or withdrawal from market without notice.

1601 VINE STREET

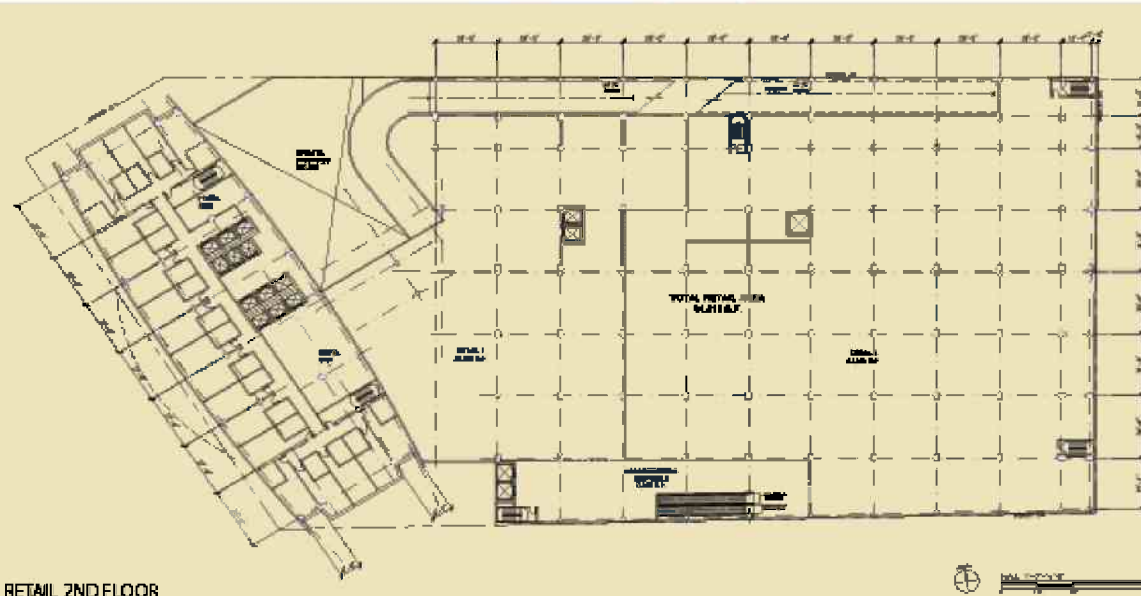
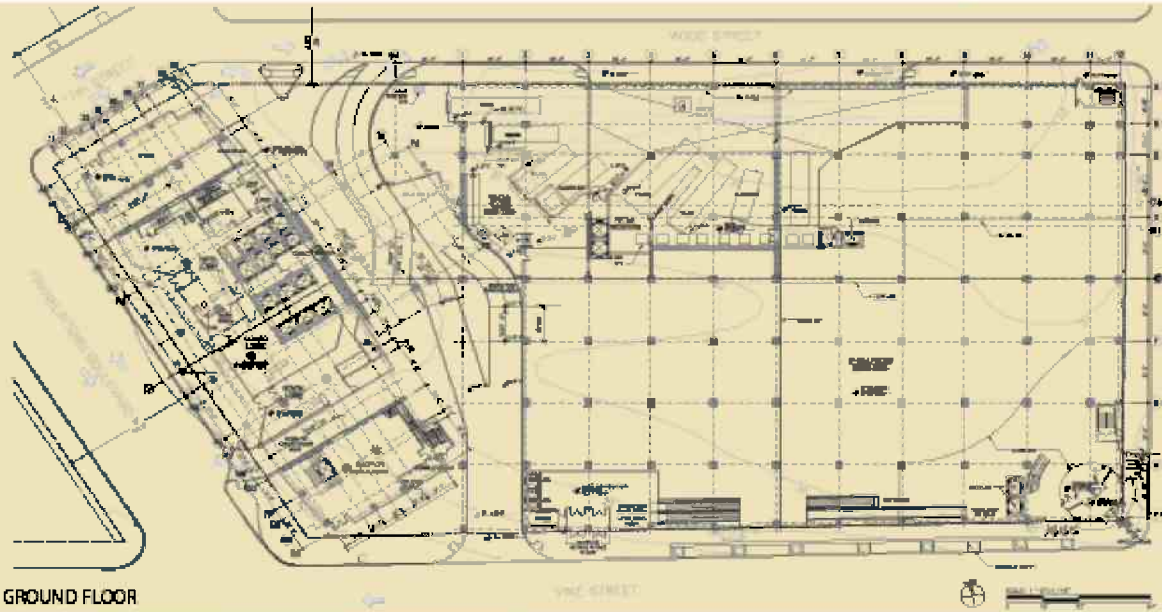
CENTER CITY PHILADELPHIA, PENNSYLVANIA



Leasing Agent



Developer



Information provided by reliable sources. Subject to errors, omissions, price change prior to sale or withdrawal from market without notice.